

**FLUID  
CONTROL  
EUROPE**

**OILFIELD EQUIPMENT MANUFACTURER  
& INTEGRATED SOLUTIONS PROVIDER**



# FLOWLINE EQUIPMENT

NACE and PED Compliant.

## ➔ Piping components



Pupjoints, Elbows & Tees up to 15000 psi and Swivels up to 6000 psi. With wing unions, clamp connectors or flanged ends.

## ➔ Adapters & special components



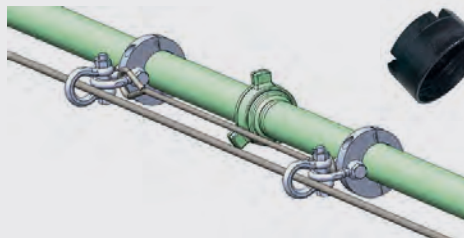
Well Testing Data Headers.



Various adapters and Crossovers for oil & gas and general industries.



Various types of transport racks & baskets, DNV or non DNV.



Associated piping accessories (tie-down clamps, thread protectors, test plugs, identification cases).

## ➔ Valve assemblies & valve actuation

Fast & Easy Installation in temporary piping systems. 2" to 6" / 2000 to 15000 psi.



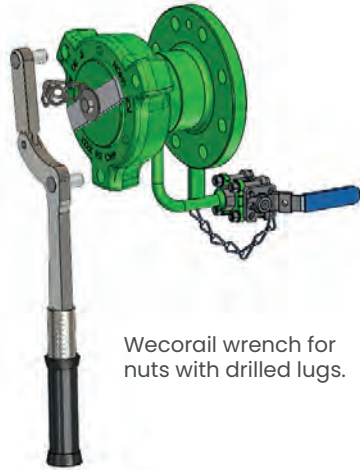
Gate, Ball, Plug or Choke Valve pneumatic or hydraulic actuation for customized assemblies.



# TRUCK & RAILCAR COUPLINGS



Railcar couplings to EN 12561-3 for LPG, ammonia, various chemicals. Available in ISO or ACME threads.



Wecorail wrench for nuts with drilled lugs.

The European leader in **TANK LOADING COUPLINGS** for Rail Tank and Truck Tank transfer.



6602 & 37008 Couplings for petroleum products, alcohol, ethanol, base oil, lubricant additives, etc.

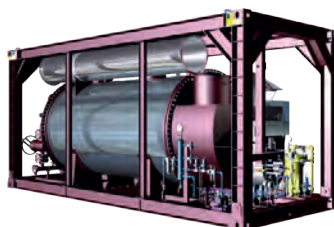
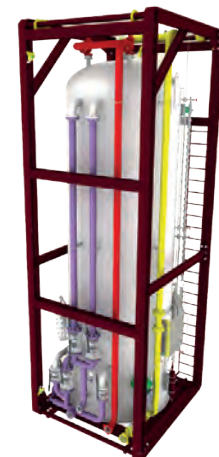
ISO Weco Type Adapter mounted between loading arm and Rail Tank Car (RTC).



# WELL TESTING & PROCESS EQUIPMENT

**Turnkey solutions for Testing operations and Production.**

3-phase separators, surge tanks, indirect heaters, choke manifolds, Metering skids.



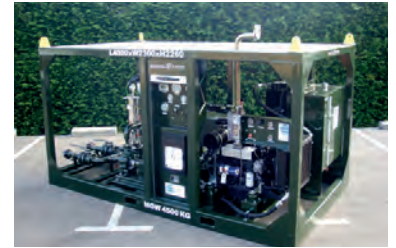
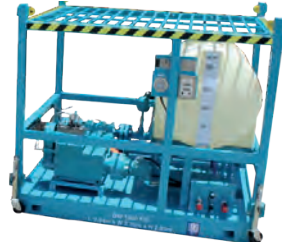
**Special devices to suit customer needs** such as Knock Out Vessel, Shrinkage Tester Units, etc.



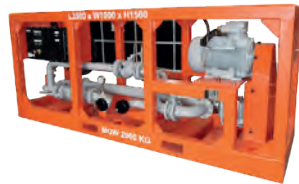
# PUMPING UNITS

## Fit-for-Purpose Pumping Units for various Exploration & Production applications:

- Crude oil pipeline transfer.
- Water and Brine Injection into wells.
- Acidized Water well cleaning.



For mobile services or permanent installations, safe or hazardous areas.  
 Diesel or electrically driven units.  
 Reciprocating, Progressive Cavity or Centrifugal pumps.



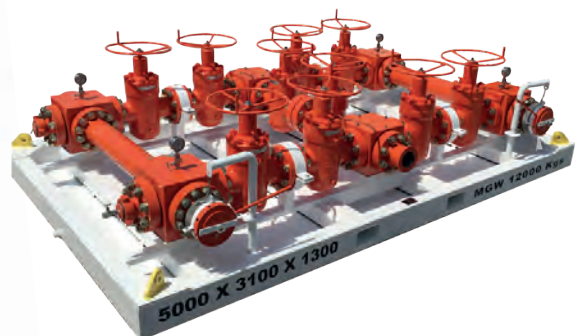
# FILTRATION EQUIPMENT

## Low & High Pressure Units to remove solids from well effluent in various applications:

- Well Testing.
- CT or Frac Flowback Systems.
- Drilling.
- Production Testing.
- Water Injection into wells.



Single or Dual Pot Sand Filters, Plug/Trash Catchers, Inline Filters.



# COUPLINGS & SWIVEL JOINTS

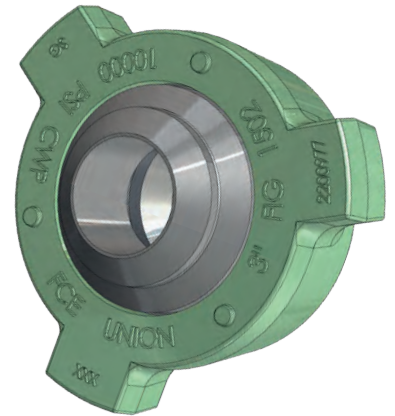
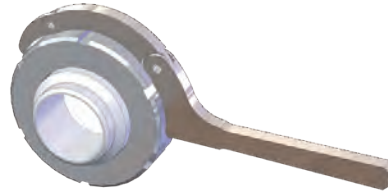
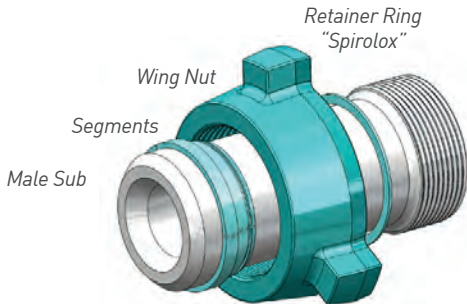


**TYPE APPROVAL**  
Design Review

## → Wing unions

NACE and PED Compliant.

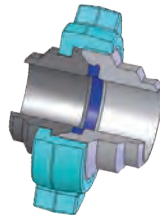
A worldwide reputed brand of Wing Unions: FCE.



Detachable nut for integral assemblies.

Hammerless Unions.

Figure 200 & 206 up to 10"  
Figure 602 up to 4"  
Figure 1002 up to 6"  
Figure 1502 up to 5"  
Figure 2202 up to 3"

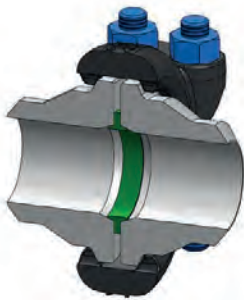


Threaded or butt weld assembly.

Up to 15000 psi in Sour Gas Service.

## → Clamp connectors

NACE and PED Compliant.



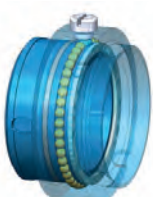
Heavy Duty up to 15000 psi.  
Standard Duty up to 5000 psi.

For Well Testing application.  
Clampsets and hubs in Sour Gas Service.

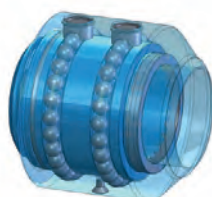
Inconel inlay in option.  
3" SD23/27 - C HD23/25  
4" SD31/34/40 - D HD27/31  
5" SD40 - E HD40  
6" SD52 - F HD40/52



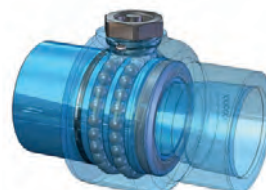
## → Swivel joints



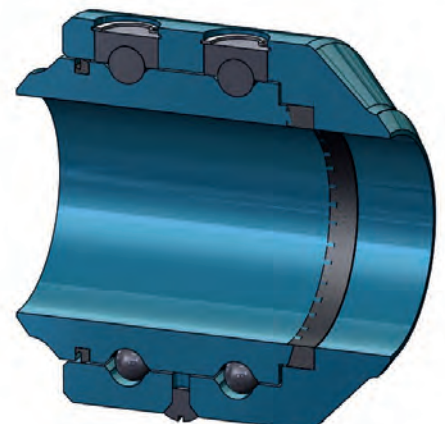
**RBP series**  
16 b / 230 psi  
2" - 3" - 4"



**RMP series**  
Up to 345 b / 5000 psi  
2" - 3" - 4" - 6"



**RHP series**  
Up to 417 b / 6000 psi  
3/4" - 1" - 1-1/4" - 1-1/2"



# Services



## A COMPREHENSIVE SET OF SERVICES

International Logistics, Technical Expertise & Engineered Solutions Capability, Commissioning & Training.



## A GUARANTEE OF PRODUCT QUALITY

Designed and Manufactured to the highest Standards. **PED module H** and **ISO 9001** certification.



## INSPECTION & RECERTIFICATION SERVICES

An extensive knowledge and well reputed Inspection body in Algeria.

## A true worldwide reputation



**FLUID  
CONTROL  
EUROPE**

### FLUID CONTROL EUROPE

786 rue George Sand  
42350 La Talaudière  
France

Tel. +33 (0)4 77 48 13 13  
Fax. +33 (0)4 77 33 01 30

[www.fce.fr](http://www.fce.fr)  
[fce@fce.fr](mailto:fce@fce.fr)



**FLUID  
CONTROL  
ALGÉRIE**

### FLUID CONTROL ALGÉRIE

Hassi-Messaoud,  
Algeria

Tel. +213 (0)29 74 76 36  
Tel./Fax. +213 (0)29 74 76 37

[www.fca-algerie.dz](http://www.fca-algerie.dz)  
[fca@fce.fr](mailto:fca@fce.fr)



**FLOW  
TEST  
EQUIPMENT**

### FLOW TEST EQUIPMENT

Jebel Ali Free Zone,  
Dubai - UAE

Tel. +971 4 880 8970  
Fax. +971 4 880 8971

[www.flowtestequipment.com](http://www.flowtestequipment.com)  
[info@flowtestequipment.com](mailto:info@flowtestequipment.com)